

SPSS: Ogive (nom/ord) (via Legacy Dialogs)

This document will explain how to generate an Ogive for a nominal or ordinal variable using SPSS as shown below.

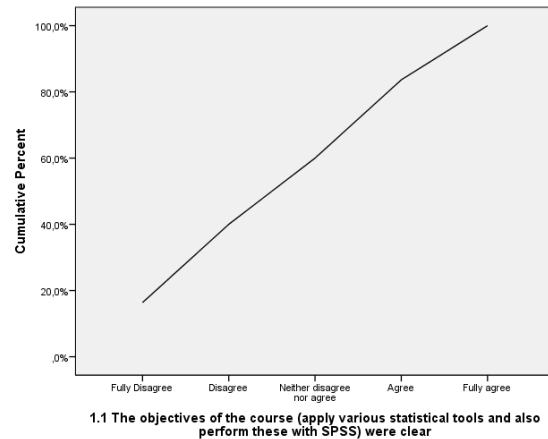


Figure 1. Example Ogive generated with SPSS

The described steps are also shown in the Youtube video at: <https://youtu.be/clx15aChR94>.

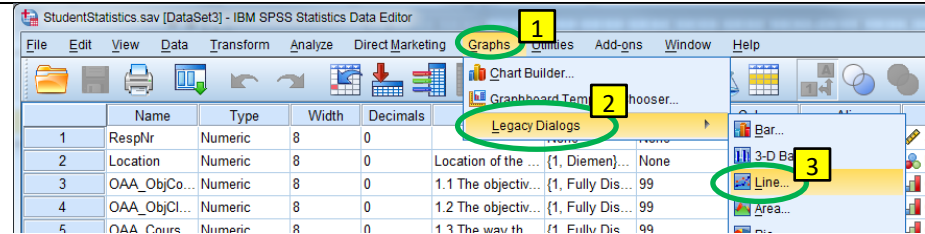
The example file used is *StudentStatistics.sav* available on the companion website <http://PeterStatistics.com>.

Ogive

1. Click in the menubar on **Graphs**

2. Click on **Legacy Dialogs**

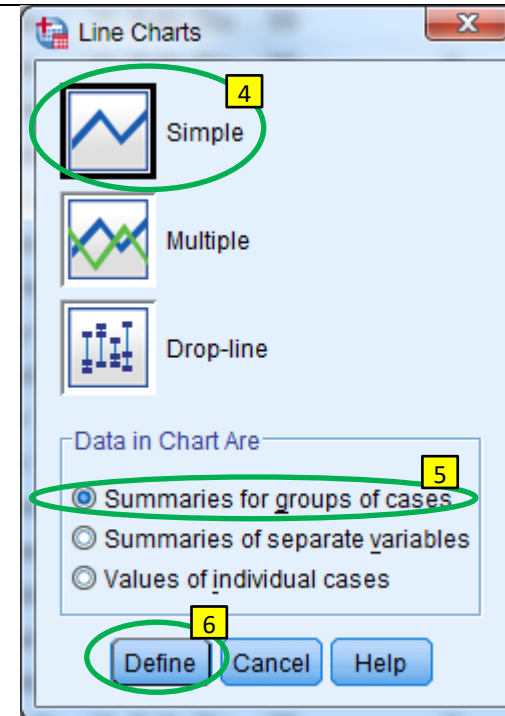
3. Click on **Line...**

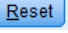



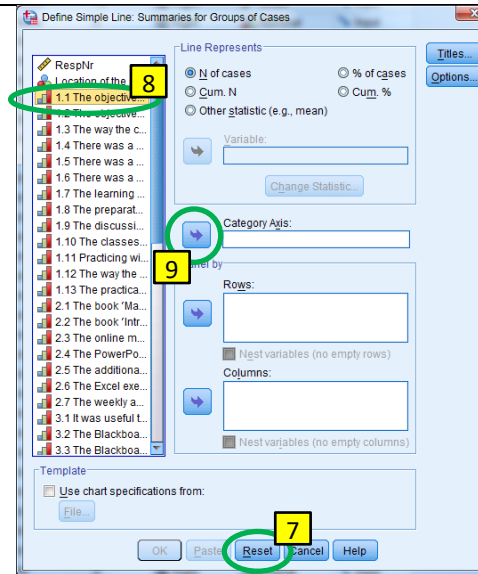
4. Click on **Simple**

5. Check if **Summaries for groups of cases** is selected

6. Click on **Define**



7. Click on 
8. Click on the variable of which you want an ogive
9. Click on  to move it to the *Category Axis*



10. Choose at *Line Represent* if you want to see the cumulative frequency (*Cum. N*), or the cumulative percentages (*Cum. %*)
11. Click on 